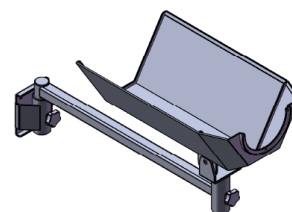
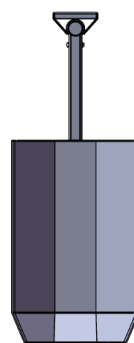
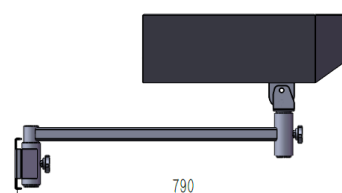
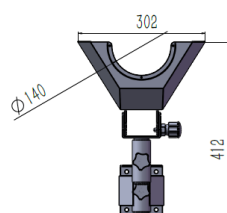


Scheda tecnica

Dispenser manuale da muro

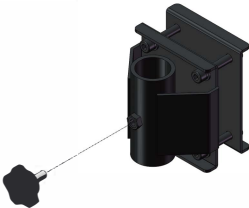


Cod. AGOMR



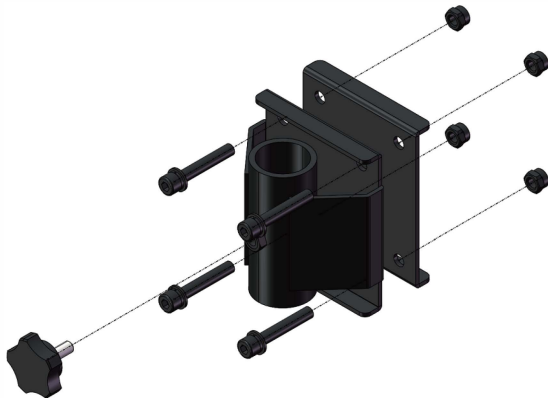
Caratteristiche tecniche

Larghezza (cm)	Lunghezza (cm)	Altezza (cm)	Diametro bocca con lama (cm)
30.2	49	412	14

Istruzioni di montaggio del distributore di carta

Parts List		
No.	Parts pictures	Number
1	 <p>Paper Roll Holder</p>	1 PCS
2	 <p>Overarm Rod</p>	1 PCS
3	 <p>Column-Clasp</p>	1 PCS
4	 <p>Screw+ Nut</p>	4 PCS
5	 <p>Hex Key</p>	1 PCS
6	 <p>Spanner</p>	1 PCS

Installation instructions



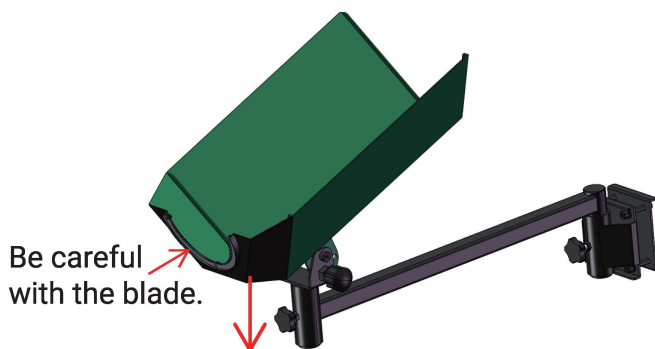
Fase 1:

Montare il gruppo colonna sul banco da lavoro e serrare le viti di serraggio.



Fase 2:

Installare l'asta di supporto sul gruppo colonna e fissarla con viti a testa esagonale.



Fase 3:

Montare il portarotolo di carta sull'asta di supporto e fissarlo con viti a testa esagonale.